

Mercedes-Benz World

Conference, Meetings and Events Brochure

Mercedes-Benz World is an incredible setting for corporate and team-building events, special gatherings and large-scale celebrations.

From thrilling driving experiences and activities to get the adrenaline pumping, to first-class conference and event spaces, we have everything you need whether it's for a few hours, a full day or an evening to remember.

Create an experience on every level!



DDR Package Inclusions

	Classic DDR Package £70 +VAT per person	Premium DDR Package £80 +VAT per person	Luxury DDR Package £90 +VAT per person
Exclusive Use of One of our Conference Suites	✓	✓	✓
Lunch	✓	✓	✓
Refreshment Breaks	2	3	3
Dedicated Event Manager	✓	✓	✓
Free On-site Car Parking	✓	✓	✓
Standard AV Equipment	✓	✓	✓
Flipcharts	✓	✓	✓
IT Technician available on arrival for set up	✓	✓	✓
Complimentary Wi-Fi	✓	✓	✓
Mercedes-Benz World Reusable Water Bottle	✓	✓	✓
Mercedes-Benz World Notepad & Pen	✗	✓	✓
Rolling Tea & Coffee from 08:00 – 18:00	✗	✓	✓
Brand Experience Tour (30 Minutes)	✗	✗	✓
Reaction Challenge (BATAK)	✗	✗	✓
Upgraded Catering Offerings (Wellbeing Focused)	✗	✗	✓

Extras:

Free on-site car parking

Standard AV equipment (as per room specifications)

Welcome digital logo/message on selected digital signage throughout the building

Selected room layout (Theatre, Cabaret, Boardroom etc)

Water fountain in suite *or* designated refreshment area

Registration desk (1 trestle per 50 guests with black linen)

Cloakroom – on request

Free admission to Mercedes-Benz World

Classic DDR Package - £70pp +VAT

Refreshments will be available in your designated refreshment area, served at a schedule suited to you, ready for when your guests arrive.

For numbers up to 30 guests, you can upgrade to a two-course lunch, that can be provided in The Bistro, located on the top floor overlooking the handling track. Subject to availability.

Classic DDR Package Inclusions:

Exclusive use of one of our conferencing facilities

Two refreshment breaks & Lunch

Mercedes-Benz World reusable water bottle

Free on-site car parking

Standard AV equipment

(as per room specifications)

Flipcharts (subject to availability)

IT Technician available on arrival for set up

Complimentary Wi-Fi

Theatre, cabaret or boardroom layout in room

(cabaret 8 per table)

Arrival

Fresh Tea and Coffee

Fresh Fruit Bowl

Mini Danish pastry selection

Afternoon

Fresh Tea and Coffee

Selection of Gooley Cookies

Lunch

Chicken Caesar Wraps

Salad Crunch & Cheese Bagel, beetroot, applewood cheese, watercress and tangy cream cheese dressing (V)

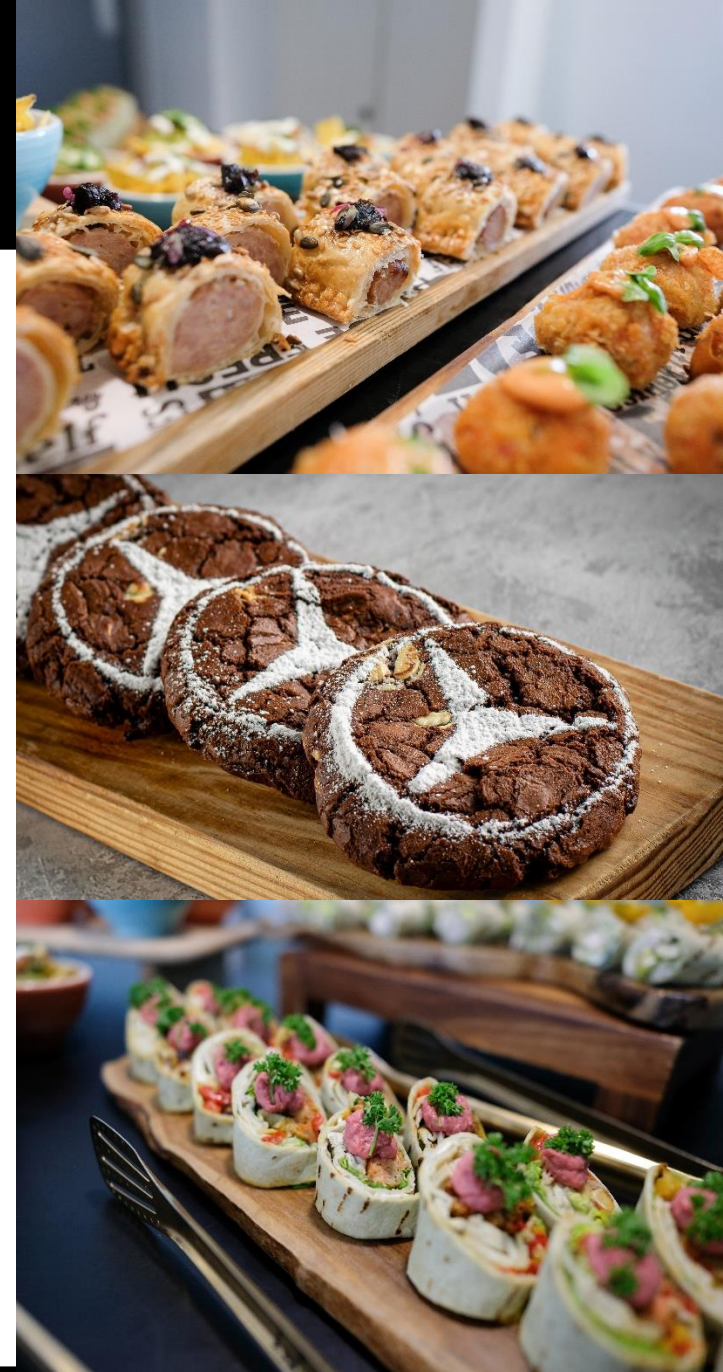
Garden Salad with crispy onions, feta cheese and traditional vinaigrette

Sausage Rolls

Asian Board including vegetable samosa, onion bhaji with a cucumber, mint and yoghurt dip

Loaded Potato Wedges

Selection of Traditional British Desserts



*Our food is prepared in kitchen where nuts, gluten and other allergens are present. Our menus descriptions do not include all ingredients. If you have a food allergy, please let our staff know before ordering. Unfortunately, it is not possible to guarantee that our kitchen is completely free of other allergens. A full list of allergen information is available on request. *N.G.C.I. - Non-Gluten Containing Ingredients. VG - vegan | V - vegetarian | DF - dairy free | GF - gluten free*

Premium DDR Package - £80pp +VAT

Our dedicated team will ensure that you have fresh tea & coffee available throughout the day, served in your designated refreshment area. An arrival, mid-morning and afternoon sweet treats will be served at a time suited to your schedule.

For numbers up to 30 guests, you can upgrade to a two-course lunch, that can be provided in The Bistro, located on the top floor overlooking the handling track. Subject to availability.

Premium DDR Package Inclusions:

- Exclusive use of one of our conferencing facilities
- Rolling tea and filter coffee 08:00-18:00
- Refreshment Snacks & Lunch
- Mercedes-Benz World pads and pens
- Mercedes-Benz World reusable water bottle
- Free on-site car parking
- Standard AV equipment
(as per room specifications)
- Flipcharts (subject to availability)
- IT Technician available on arrival for set up
- Complimentary Wi-Fi
- Theatre, cabaret or boardroom layout in room
(cabaret 8 per table)

Arrival

- Fresh Fruit Bowl
- Mini Danish Pastry Selection

Mid-Morning

- Seasonal Muffins

Afternoon

- Selection of Goopy Cookies

Lunch

- Chicken Caesar Wraps
- Salad Crunch & Cheese Bagel, beetroot, applewood cheese, watercress and tangy cream cheese dressing (V)
- Garden Salad with crispy onions, feta cheese and traditional vinaigrette
- Sausage Rolls
- Asian Board including vegetable samosa, onion bhaji with a cucumber, mint and yoghurt dip
- Loaded Potato Wedges

- Selection of Traditional British Desserts



*Our food is prepared in kitchen where nuts, gluten and other allergens are present. Our menus descriptions do not include all ingredients. If you have a food allergy, please let our staff know before ordering. Unfortunately, it is not possible to guarantee that our kitchen is completely free of other allergens. A full list of allergen information is available on request. *N.G.C.I. - Non-Gluten Containing Ingredients. VG – vegan | V – vegetarian | DF – dairy free | GF – gluten free*

Luxury DDR Package - £90 pp + VAT

Why not treat your clients to an upgraded DDR offering? Allow your guests to sit back and relax with an array of activities & catering focused on wellbeing.

Luxury DDR Package Inclusions:

Exclusive use of one of our conferencing facilities
Rolling tea and filter coffee 08:00-18:00
Refreshment snacks & Lunch
30 Minute Brand Experience Tour
Reaction Challenge
Mercedes-Benz World pads and pens
Mercedes-Benz World reusable water bottle
Free on-site car parking
Standard AV equipment
(as per room specifications)
Flipcharts (subject to availability)
IT Technician available on arrival for set up
Complimentary Wi-Fi
Theatre, cabaret or boardroom layout in room
(cabaret 8 per table)

Arrival refreshments

Selection of Mini Danish
Ham & Cheese or Cheese & Tomato
Croissants
Selection of smoothies and fruit juices

Mid-morning refreshments

Daily Mini Muffins
Seasonal fruit Vegan Yoghurt Parfait

Afternoon Refreshments

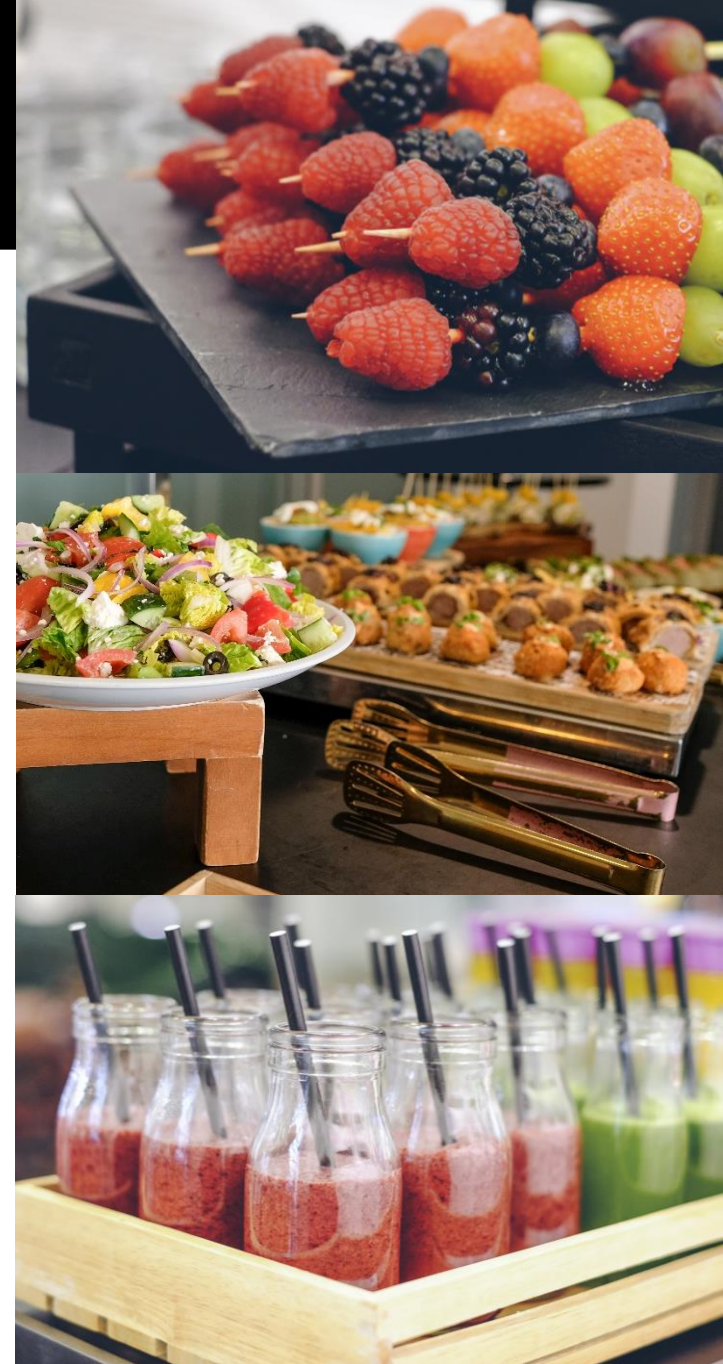
Selection of Gooley Cookies
Flavoured Water
Mixed Nuts

Lunch

Chicken Caesar Wraps
Salad Crunch & Cheese Bagel, beetroot, applewood cheese, watercress and tangy cream cheese dressing
Garden Salad with crispy onions, feta cheese and traditional vinaigrette
Hummus & Flat Breads
Chicken Kebabs with harissa dip
Sausage Rolls
Asian Board including vegetable samosa, onion bhaji with a cucumber, mint and yoghurt dip
Loaded Potato Wedges

Selection of Traditional British Desserts
Seasonal Eton Mess

*Our food is prepared in kitchen where nuts, gluten and other allergens are present. Our menus descriptions do not include all ingredients. If you have a food allergy, please let our staff know before ordering. Unfortunately, it is not possible to guarantee that our kitchen is completely free of other allergens. A full list of allergen information is available on request. *N.G.C.I. - Non-Gluten Containing Ingredients. VG - vegan | V - vegetarian | DF - dairy free | GF - gluten free*



Summer BBQ

BBQ Package from £40+vat per person, or DDR Lunch upgrade available for £17.50+Vat per person.
Example menu. Allocated options: 3 Grill, 2 Salads, 2 Sides & 2 Desserts

Why not offer your guests our BBQ package, with live chefs cooking on our Bistro Terrace, the perfect package during the summer months (30 – 150 guests).

Fresh from the Grill (please select 3)

- Grilled Beef Burger (gf)
- Bratwurst Sausage
- Chimichurri Grilled Flat Iron Steak (gf)
- Middle Eastern Style Lamb Kofta
- Peri Peri Marinate Grilled Butterfly Chicken Breast (gf)
- Texan dry rub Pork Chop (gf)
- Vegan Hotdog
- Vegan Protein Burger

Selection of breads, buns and subs, toppings, sauces, cheese and pickles included

Salads (please select 2)

- Chicken Tray Bake – Corn-fed Chicken, Roast Baby Potatoes, Crispy Bacon, Gem Lettuce & Caesar Dressing
- Italian Mozzarella – Bocconcini, Fresh Basil, Cherry Tomatoes, Modena Aged Balsamic (gf*)
- Mediterranean Vegetable Pasta Salad – Orzo Pasta, Grilled Vegetables, Grana Padano Shavings
- Tuna Nicoise – Tuna Fish, New Potatoes, French Beans, Black Olives, Soft Boiled Egg, Lemon & Herb Vinaigrette
- Tabouleh – Cracked wheat, diced tomato, red onion, cucumber, flat leaf parsley and lemon dressing
- Potato Salad – New Potatoes, spring onions and mustard crème fraiche.
- Garden Salad – Fine Beans, Mangetout, Broccoli, Spring Onions, Ginger, Coconut Yoghurt (df, gf* , vg)

Sides (please select 2)

- Potato Wedges with Cajun Seasoning (df, gf* , vg)
- Grilled Corn on the Cob with Burnt Butter (gf, v)
- Roasted Sweet Potato Wedges with Chilli Maple Dressing (df, gf*)
- Luxury Macaroni & Cheese with 3 cheese sauce (v)

Desserts (please select 2)

- British Summer Eton Mess (gf, v)
- Classic Italian Tiramisu with Amaretto (v)
- Chocolate Chip Brownie, Poached Cherries and Honeycomb (v)
- Lemon & Blueberry Cheesecake Jars (gf, v)
- Raspberry & Coconut Cream Parfait (gf, vg)
- Strawberry seasonal shortcake (v)

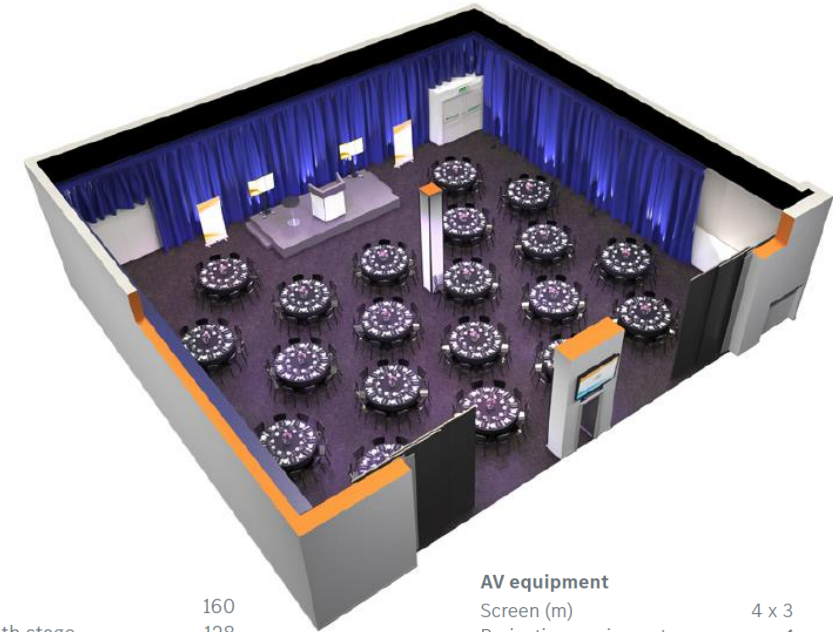
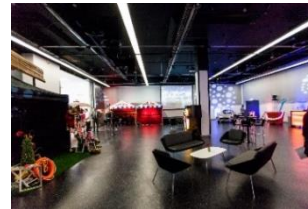
*Our food is prepared in kitchen where nuts, gluten and other allergens are present. Our menus descriptions do not include all ingredients. If you have a food allergy please let our staff know before ordering. Unfortunately, it is not possible to guarantee that our kitchen is completely free of other allergens. A full list of allergen information is available on request. *N.G.C.I. - Non-Gluten Containing Ingredients. VG – vegan | V – vegetarian | DF – dairy free | GF – gluten free*



Brooklands Hall

Located on the Ground Floor and offering high quality audio-visual equipment, this large, impressive space can be branded and configured for anything from business conferences to product launches. It is a blank canvas ready for you to create an environment perfect for your event.

Take a tour of the venue <https://headbox.captur3d.io/view/headbox/mercedes-benz-world>



Capacity

Cabaret	160
Cabaret with stage	128
Theatre	350
Banqueting	200
Banqueting with stage	120
Dinner Dance	140
Drinks Reception	350
Standing Buffet	250

Dimensions

Floor space (m)	18 x 20
Ceiling height (m)	4.5

Access

Disabled	✓
Lift	✓
Vehicle	✓

AV equipment

Screen (m)	4 x 3
Projection equipment	✓
PC	✓
Laptop compatibility	✓
Lectern available	1
PA system	✓

Additional information

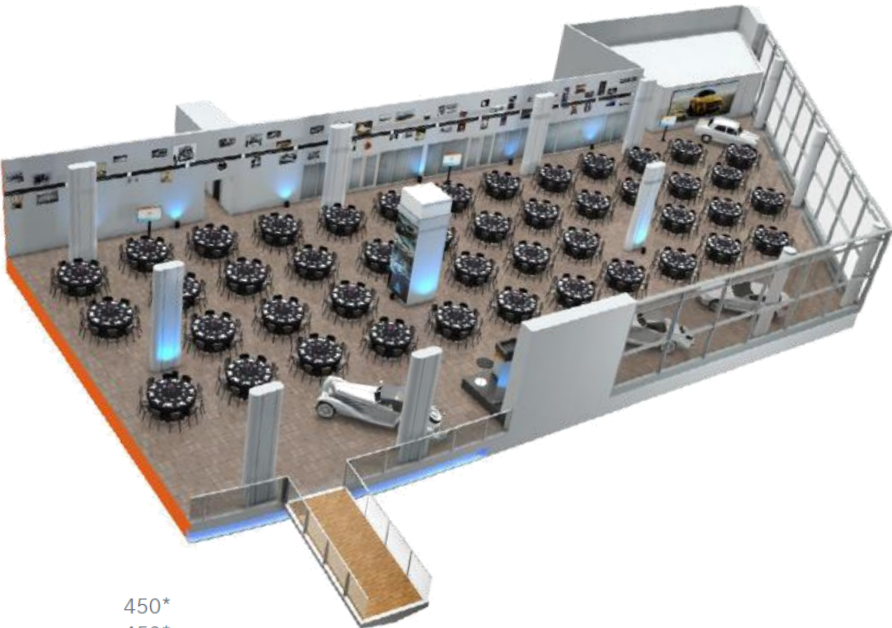
Air conditioning	✓
Blackout	✓
Power sockets	12
3-phase power	✓
Network access points	8
Floor finish	Solid
Pillars	✓
Stage available	✓
Wi-Fi available	✓
Water cooler	2

Exhibition Area

Located on the first floor, the Exhibition Area is a truly versatile space that can accommodate up to 650 guests for an exhibition, where guests are expected to come and go.

This airy and spacious environment benefits from natural daylight and views over our Handling Circuit, and our range of cars can be removed or arranged based on your exact requirements allowing your guests to mingle with ease. It can also be set up as a large refreshment area for any conferences taking place in the Brooklands Hall, Russell or Hamilton Suite

It's also one of our most popular evening venue spaces, accommodating up to 450 for a dinner.
Take a tour of the venue <https://headbox.captur3d.io/view/headbox/mercedes-benz-world>



Capacity	
Banqueting	450*
Exhibitions	450*
Drinks reception	450*

Dimensions	
Floor space (m)	1130sq
Ceiling height (m)	4.5

Access	
Disabled	✓
Lift	✓
Vehicle	✓

*Dependent on chosen area and requirements

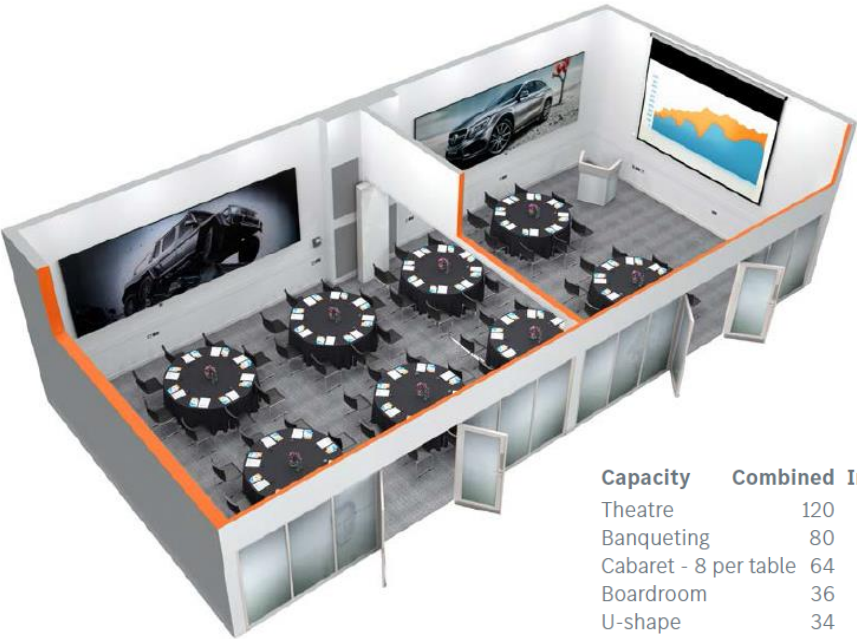
Additional information	
Air conditioning	✓
Natural daylight	✓
Power sockets	45
3-phase power	✓
Hard-wired connection	✓
Floor finish	Solid
Pillars	✓
Wi-Fi available	✓

Russell and Hamilton Suite

The Hamilton & Russell Suite is located on the first floor, the suites can be used individually or as one larger space, thanks to the removable partitioning.

A variety of configurations from boardroom to theatre can be arranged across one or both facilities to suit your requirements, and there is the added benefit of a large exhibition floor adjoining the rooms where refreshments and lunch can be served.

Take a tour of the venue <https://headbox.captur3d.io/view/headbox/mercedes-benz-world>



Capacity	Combined	Individual
Theatre	120	60
Banqueting	80	40
Cabaret - 8 per table	64	32
Boardroom	36	20
U-shape	34	18

Dimensions		
Floor space (m)	15.6 x 7	7.8 x 7
Ceiling height (m)		5

Access	
Disabled	✓
Lift	✓

Additional Information	
Secondary natural daylight	✓
Privacy blinds	✓
Power sockets	8
Network access	2
Floor finish	Carpet
Wi-Fi available	✓
Water cooler	2

AV equipment	
Laptop compatibility	✓
Projection equipment	✓
Projection screens	1 per room
Interactive whiteboard	1 per room

Moss Suite

Named after a legend of motor racing, the Moss Suite is a modern, airy conference spaces, ideal for small meetings, presentations and seminar sessions.

Located on the First Floor, it is perfect for a more intimate presentation or meeting and has the benefit of a private lobby, which allows for a meeting to break out into a more relaxing and casual environment.

Take a tour of the venue <https://headbox.captur3d.io/view/headbox/mercedes-benz-world>



Capacity		
Boardroom	12	
Dimensions		
Floor space (m)	7.8 x 4.1	
Ceiling height (m)	5	
Access		
Disabled	✓	
Lift	✓	
AV Equipment		
Laptop compatibility	✓	
Screen (m)	4 x 3	
Projection equipment	✓	
Interactive whiteboard	✓	
DVD	✓	
PC	✓	
Speakers	✓	
Interactive whiteboard	✓	
Additional information		
Privacy blinds	✓	
Floor finish	Carpet	
Private lobby	✓	
Power sockets	3	
Network access points	1	
Secondary natural daylight	✓	
Water cooler	1	

S-Class Suite

Located on the First Floor, the S-Class Suite is the perfect location for you to hold your meeting in luxurious and refined surroundings and make every guest feel like a VIP.

Depending on your numbers catering can be served either within the suite or directly outside the suite in the S-Class Gallery where your guests could dine amongst our collection of luxury cars.

Take a tour of the venue <https://headbox.captur3d.io/view/headbox/mercedes-benz-world>



Capacity	
Theatre	60
Banqueting	60
Cabaret - 8 per table	64
Boardroom	30
U-shape	28
Classroom	30
Drinks reception	120
Standing buffet	70

Dimensions	
Floor space (m)	100sq
Ceiling height (m)	3.3

Access	
Disabled	✓
Lift	✓
Vehicle	✓

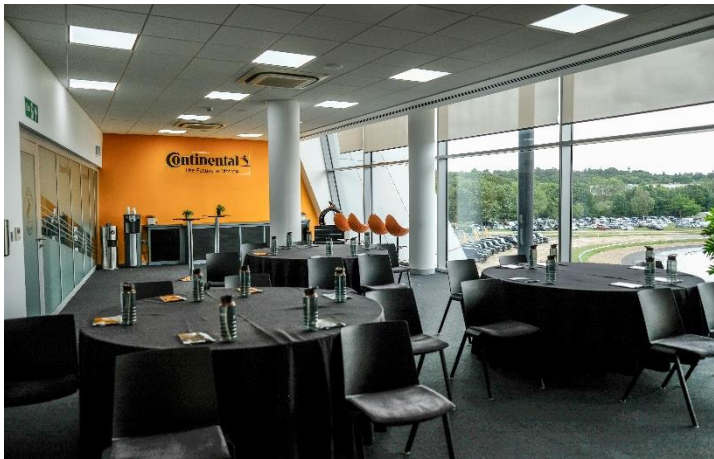
Additional information	
Air conditioning	✓
Blackout	✓
Floor finish	Carpet
Wi-Fi available	✓
LCD Laser Projector with 3800mm x 2200mm screen	
16/9 widescreen format	✓
Secondary natural daylight	✓
Water cooler	1

Continental Suite

Located on the First Floor with amazing views overlooking our Handling Circuit, it's the ideal location to impress your team.

Depending on your numbers catering can be served either within the suite or directly outside the room.

Take a tour of the venue <https://headbox.captur3d.io/view/headbox/mercedes-benz-world>



Capacity

Boardroom	24
Theatre	40
Cabaret	32

Dimensions

Floor space (m)	13.5 x 6.5
Ceiling height (m)	2.9

Access

Disabled	✓
Lift	✓

AV equipment

65" Ultra HD LED screen 16/9 widescreen format with soundbar	✓
Video	✓
PC	✓
Laptop compatibility	✓
Clickshare	✓
Speakers	✓
Interactive whiteboard	✓

Additional Information

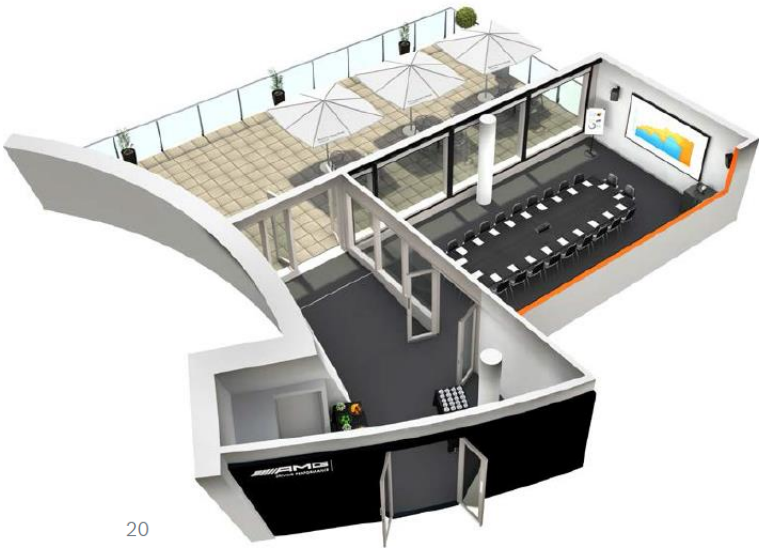
Premium track view	✓
Frosted glazing	✓
Air conditioning	✓
Natural daylight	✓
Blackout	✓
Power sockets (floor)	6
Network access point	1
Floor finish	Carpet
Wi-Fi available	✓
Pillars	✓
Water cooler	1

AMG Suite

Featuring a 20-seater carbon fibre boardroom table and advanced multimedia equipment, the AMG Suite is ideal for large company meetings.

Located on the top floor with a separate reception area where guests can enjoy a relaxing coffee and lunch, it also features a large outdoor terrace with fantastic views of our Handling Circuit and the Surrey countryside beyond.

Take a tour of the venue <https://headbox.captur3d.io/view/headbox/mercedes-benz-world>



Capacity			
Boardroom	20		
Dimensions			
Floor space (m)	10 x 5.5		
Ceiling height (m)	3		
Access			
Disabled	✓		
Lift	✓		
AV Equipment		Additional information	
98" Ultra HD LED screen 16/9 wide-screen format	✓	Air conditioning	✓
DVD	✓	Natural daylight	✓
Video	✓	Blackout	✓
PC	✓	Power sockets	4
Laptop compatibility	✓	Network access points	1
		Floor finish	Carpet
		Wi-Fi available	✓
		Terrace	✓
		Water cooler	1

AMG Performance Area

Located on the top floor, the AMG Performance Centre is an ideal space for stylish dinners, exhibitions and events. We can tailor the area to your exact requirements allowing your guests to dine, meet and mingle amongst our display of premium AMG vehicles.

Take a tour of the venue <https://headbox.captur3d.io/view/headbox/mercedes-benz-world>



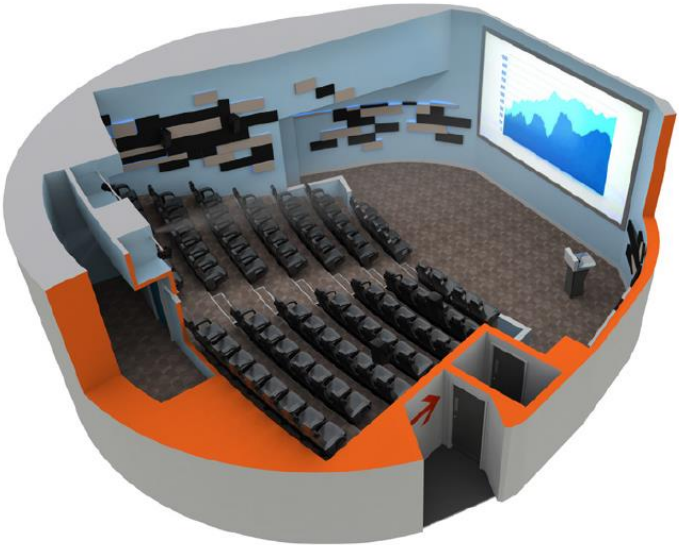
Capacity		Additional information	
Banqueting	120	Natural daylight	✓
Dinner dance	120	Air conditioning	✓
Drinks reception	120	Power sockets	4
Standing buffet	120	Network access points	4
Dimensions		Floor finish	Solid
Floor space (m)	120sq	Pillars	✓
Ceiling height (m)	3.9	Wi-Fi available	✓
Access			
Disabled	✓		
Lift	✓		
Vehicle	✓		

The Cinema

Situated on the top floor, the Cinema at Mercedes-Benz World has the latest audio-visual technology to effectively communicate your message on screen for up to 88 people, all comfortably accommodated in spacious tiered seating.

Sophisticated equipment enables you to switch with ease between screening a film and projecting a presentation, so whatever the occasion, you can capture your audience's attention with sharp images and crystal-clear sound.

Take a tour of the venue <https://headbox.captur3d.io/view/headbox/mercedes-benz-world>



Capacity			
Theatre	88		
Dimensions		Additional information	
Floor space (m)	12 diameter	Air conditioning	✓
Ceiling height (m)	4	Blackout	✓
Access		Floor finish	Carpet
Disabled	✓	Surround sound	✓
Lift	✓		
AV Equipment			
Screen (m)	6 x 3.38		
Projection equipment	✓		
DVD	✓		
Video	✓		
Laptop compatibility	✓		
Lectern available	x2		
PA system	✓		

Suite 63

Situated on the top floor within our AMG Performance Centre, Suite 63 is our executive boardroom. An intimate, focussed meeting room with the benefit of an additional private room allowing you to break out in a more relaxed, casual sofa area, it is ideal for small professional meetings, interviews or presentations.

Take a tour of the venue <https://headbox.captur3d.io/view/headbox/mercedes-benz-world>



Capacity		Additional information	
Boardroom	7	Air conditioning	✓
Dimensions Main room (m) 19sq Lounge room (m) 12sq Ceiling height (m) 2.6		Power sockets	
		Main room	8
		Lounge room	6
		Network access points	4
Access Disabled ✓ Lift ✓		Floor finish	Carpet
		Wi-Fi available	✓
		Water cooler	1
AV Equipment 42in Plasma ✓ Laptop compatibility ✓ Audio conferencing ✓			

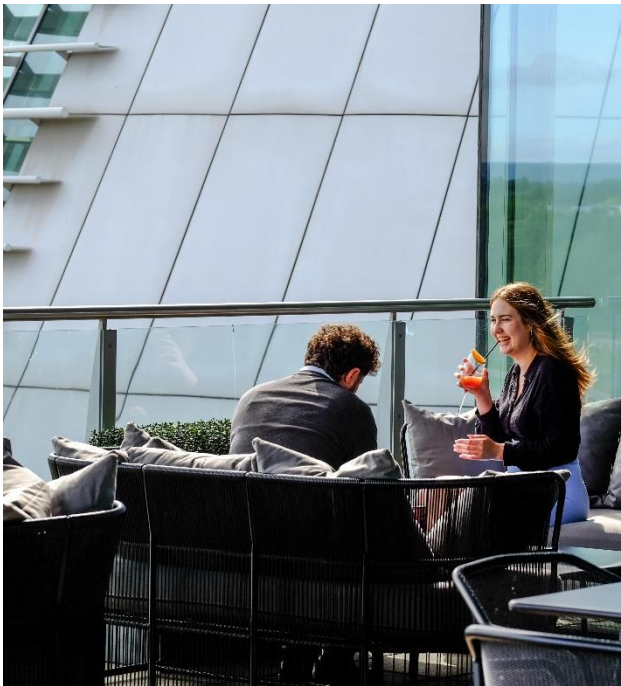
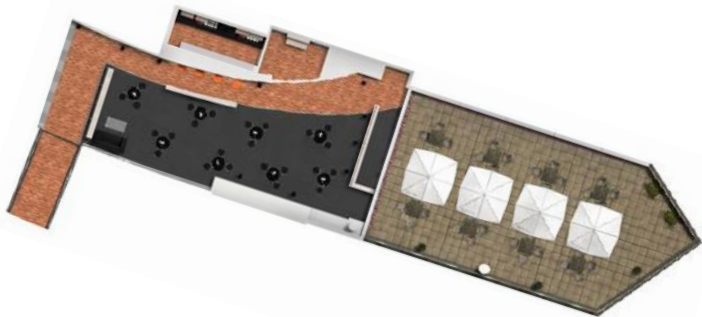
The Bistro

Situated on the top floor, overlooking the handling track why not enhance your meeting or team building day with delicious food and spectacular views from the Bistro.

Choose from a two or three-course menu or even a BBQ during the summer months allowing guests to soak up the sun on the beautiful roof terrace.

Take a tour of the venue <https://headbox.captur3d.io/view/headbox/mercedes-benz-world>

Lunch Upgrade available for DDR package (up to 50 people)
Exclusive use BBQ Event (ideal for 30-120 guests)



Dimensions	
Floor space	
Widest (m)	14.6 x 6
Narrowest (m)	3.9
Access	
Disabled	✓
Lift	✓
Additional Information	
Air conditioning	✓
Natural daylight	✓
Floor finish	Carpet
Pillars	✓
Wi-Fi available	✓
Terrace	✓

Driving Experiences

Turn a meeting into an event with our corporate driving experiences.



AMG Performance Run *OR* 4x4 Terrain Challenger

Learn to handle the car on different elements of the track, supported by the very latest in vehicle control technology – all with a Pro-Driver by your side.

1 hour Track or 4x4 experience. (2 per car, 30 minutes' drive time per person).

From £130 + vat per person in 4X4
From £155 + vat per person in EV
From £160 + vat per person in AMG

Maximum of 20 guests per hour



Best of Both

Have more time? Enjoy the best of both in the AMG and the G-Wagon. Guided by our Pro-Drivers to get the most out of the vehicles.

2 hour Handling track and 4x4 Off-Road experience
(2 per car, 1 hour driving, 1 hour passenger).

From £270 + vat per person

Maximum of 40 guests per hour



Passenger Ride

Guest sits in the passenger seat next to one of our Pro-Drivers as they enjoy the track through the eyes of a professional driver.

15-20 minute experience (3 per car).

From £30 +vat per person AMG, EV *or* 4x4 (15-20 mins)
From £55 +vat per person AMG *or* EV & 4x4 (30-40 mins)

Maximum of 72-90 guests per hour



Testimonial

“My guests were incredibly happy with the day and could not have asked for a better experience. Everything from the welcome, the tour, the group guides, and not to talk about the instructors in the cars were on point. Even as someone that wouldn’t describe them self as a car interested-person, I really enjoyed it!”

Sony, March 2025

Indoor Entertainment

Turn a meeting into an event with our corporate team building activities.

Simulator Zone

£650 + vat per hour* / £10+vnt pp per play

Experience the thrill of high-speed racing with our fourteen GT-style simulators! Challenge yourself against the clock in an exhilarating 10-minute race on our ever-changing track of the month. Food and drink can be served within this area, if hired exclusively.

Up to 90 guests can play per hour.

The Grid

£650 + vat per hour* / £15+vnt pp per play

Step into the world of Formula 1™ like never before. The Grid delivers an electrifying experience designed for smaller groups, with just six guests racing head-to-head at a time in our state-of-the-art F1™ Simulators. It's you versus the clock, your rivals, and the race. Food and drink can be served within this area, if hired exclusively.

Up to 24 guests can play per hour.

Fast Trax

£500 + vat per hour* / £3+vnt pp per play

Our state-of-the-art slot car racing setup ensures intense competition that will keep everyone excited until the chequered flag. With a real time leader board, realistic controls and live commentary, see if you can set the fastest lap time and win the race.

Up to 60 guests can play per hour.

Brand Experience Tour

£20 + vat per person 1 hour / £10 + vat per person 30 minutes

Go behind the scenes and enjoy a fascinating insight into the Mercedes-Benz brand as one of our experts guides you around our amazing building with its stunning exhibitions and attractions.

Minimum of 8 guests – Maximum of 30 per group

*For groups of 20+ exclusive use of Simulators & Fast Trax is required.



Testimonial

“We had an amazing time, and we truly appreciate your team’s invaluable support. The feedback from our customers was overwhelmingly positive, and we’re already considering hosting more events at Mercedes-Benz World in the near future. A special thank you for arranging the simulator experience—it was a fantastic addition to the day!”

Wizz, March 2025



End of Day Package

Enjoy our Two-hour end of day package to conclude your event with us, served in The Bistro between 16:00-18:00.

End of Day Menu

2 glass of prosecco *or* beer *or* soft drinks per person

Smoked Salmon & Cream Cheese Pinwheel
Coronation Chicken Sub
Smashed Avocado Bruschetta

Nibbles
Spanish, Greek & Italian Olives
Root Vegetable Crisps
Spiced Rice Cakes
Giant Roasted Corn
Wasabi Peas

* Seasonal menu upgrades available

This package includes one Simulator play per person.

Also includes, access to a private viewing in our luxurious cinema of the exclusive film “The World’s Most Valuable”

£40.00+vat pp

*Cinema subject to availability, on the day of your event.

Why not upgrade your End of Day package to include canapes?

Canapé Upgrade Options

Starts at £24.00 per person – choice of 5 – must include 2x vege/vegan
Example menu (subject to seasonal change)

Meat

Parma Ham & Melon (gf)
Lamb Tikka Masala Kebabs (gf)
Sticky chicken and black sesame bites (gf)
Coronation chicken poppadums with mango chutney (gf)
Mini Yorkshire puddings with roast beef
Duck bon bons

Fish

Skewers of teriyaki salmon with toasted sesame and micro coriander (gf)
Tempura prawns with sweet chilli dip
Calamari bites with lemon aioli dip
Gravlax on crostini with horseradish and micro cress
Prawn & Marie Rose Sauce Mini Coup
Smoked Salmon & Cream Cheese Crostini

Vegetarian and Vegan

Wild mushroom and parmesan arancini with truffle mayo dip (v)
Tempura halloumi and sesame (v)
Edamame and pea falafel with coconut yoghurt (vg, gf)
Avocado salsa Verde on baked sweet potato bites (vg, gf)
Vegan corn fritters with carrot miso butter (vg, gf)
Goat cheese on a Parmesan shortbread (v)
Chilli Paneer with Mint Chutney (v, gf)



Testimonial

“I just wanted to say a big thank you to you and your staff for an excellent evening. Everything worked out brilliantly – people were very competitive on the simulators and wanted to beat each other. The food was amazing – extremely tasty, well-presented and very enjoyable. The team couldn’t have been more helpful and accommodating – from the bar staff, the simulator helpers etc. So, a big thank you to you and your team.”

Dominos, May 2025

Did you know we offer Dinner?

(All costs exclude VAT)

Why not extend your day to include dinner for your guests? Enquire with your Event Sales Executive today!

Bowl Food Package Inclusions:

Starts at £90+vat per person (Minimum of 60 guests)

Located on AMG Performance Floor, Brooklands Hall or the Exhibition Floor

Arrival Drinks – One Glass of Prosecco, Bottle of Beer or Non-Alcoholic Alternative per person

Bowl Food (4x Savoury Options & 2x Sweet Options)

Poseur Tables

Three Course Meal Package Inclusions:

Starts at £105+vat per person (Minimum of 80 guests)

Located on AMG Performance Floor, Brooklands Hall or the Exhibition Floor

Arrival Drinks – One Glass of Prosecco, Bottle of Beer or Non-Alcoholic Alternative per person

Three Course Menu

Tea, Coffee & Petit Fours

Half a Bottle of Wine & Half a Bottle of Water per person

Guests Seated at Round Tables

Tables Dressed with Black Linen & 'Ghost' Chairs



Sustainability

At Mercedes-Benz World, we are committed to fostering a more sustainable future through both innovative practices and meaningful partnerships.

Continental Tyres: Sustainable Innovation

We proudly collaborate with Continental Tyres, ensuring that all vehicles used in our Driving Experiences are equipped with tyres made from responsibly sourced materials. Continental is leading the way in sustainable tyre production, including research into using dandelions as an alternative source for natural rubber, with a new research facility in Anklam dedicated to this advancement.

The Heart of England Forest: Reforestation and Community Impact

Since 2019, Mercedes-Benz World has supported The Heart of England Forest, contributing to reforestation efforts that promote environmental sustainability and biodiversity. Each year, we help plant 6,000 native broadleaf trees, establish nearly nine acres of new woodland, and provide opportunities for individuals with disabilities and underprivileged groups to experience the forest.

These initiatives reflect our ongoing commitment to sustainability, reducing our ecological footprint, and supporting both environmental and social causes.





Getting Here

Mercedes-Benz World at Brooklands is the ideal location for any event. Located 25 miles from Central London there is ample on-site parking as well as direct public transport options, so however you choose to arrive, it couldn't be easier to get to Mercedes-Benz World.

By car

From Junction 10 of the M25 follow the A3 towards London taking the first exit and turn left at the roundabout onto the A245 (signposted Weybridge). Continue along the A245 for approximately 1.5 miles. At the second roundabout turn right onto Sopwith Drive. Continue straight over two roundabouts. You have arrived at Mercedes-Benz World.

By train

Less than 3 miles from Weybridge station, on the London Waterloo to Woking/Portsmouth and Staines to Weybridge lines. There is a public bus service that will deliver you to the door (see below).

By bus

Mercedes-Benz World is easily accessible via the Arriva bus routes 436 and 437 which serve Woking, Sheerwater, Byfleet and Weybridge train station. For bus times please visit www.arrivabus.co.uk.

By air

Only 25 minutes drive from Heathrow and 30 minutes drive from Gatwick.

